

DIRECTIONS

- Directions
- Time to SLC/Provo

RECREATION & ATTRACTIONS

- Snowmobiling
- Skiing
- Boating
- Fishing
- Shopping - Midway/PC
- Fine Dining & Spas
- Bowling/Theatres



COMMUNITY INFO

- Schools
- Wasatch County Recorder's Office
- Chamber of Comm.
- Utility Co.'s
- Post Office

HOA INFO

- 435-785-5763 ph.
- 435-785-8763 fax
- TimberlakesUtah.com
- 218 Timberlakes Est. Heber, UT 84032

TIMBER LAKE ESTATES

Minutes Away. A World Apart

Welcome to one of Utah's best kept secrets nestled just east of the quaint Heber Valley. Timber Lakes Estates is a private mountain community established in 1971 with a unique offering of seasonal cabins, affordable year-round homes, and raw land properties spread out over 1500 acres. Enjoy a backdrop of lakes, creeks, ponds, Aspen and Pine trees, moose, deer, and views of the Heber Valley and Timponogous mountain range. Here, permanent residents and weekenders alike enjoy a romantic rustic setting with incomparable scenery, wildlife, and unlimited outdoor activities year-round. With a diverse landscape of properties. There is opportunity for every budget.



Christie Wilkes
Associate Broker
390 N. Main St.
Heber City, UT 84032
801.891.4938
christie.wilkes@sothebyrealty.com
www.TimberLakeEstates.com

Summit

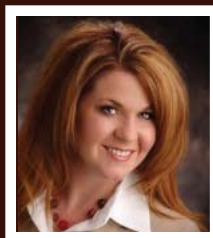
Sotheby's
INTERNATIONAL REALTY



Christie Wilkes
Associate Broker
390 N. Main St.
Heber City, UT 84032
801.891.4938
christie.wilkes@sothebyrealty.com
www.TimberLakeEstates.com

Summit

Sotheby's
INTERNATIONAL REALTY



Christie Wilkes
 Associate Broker
 390 N. Main St.
 Heber City, UT 84032
 801.891.4938
 christie.wilkes@sothebyrealty.com
 www.TimberLakeEstates.com

Summit | Sotheby's
 INTERNATIONAL REALTY